

TRANSOCEAN ENABLER

HARSH-ENVIRONMENT SEMI-SUBMERSIBLE



For additional information please contact:

Transocean
Marketing Department
1414 Enclave Parkway
Houston, TX 77077, USA
Phone: + 1-713-232-7500
Fax: + 1-713-232-7880
marketing@deepwater.com
www.deepwater.com

General Description

Design / Generation	GVA 4000 NCS
Constructing Shipyard	DSME
Year Entered Service / Significant Upgrades	2016
Classification	DNV GL + 1A1 Column Stabilized Drilling Unit (N)
Flag	Norwegian
Dimensions	380.5 ft.(116 m) long x 318.2 ft. (97 m) wide (main deck)
Drafts	82.5 ft. (25.15 m) max operating / 76 ft. (23.15 m) operating / 31 ft. (9.45 m) transit / 64 ft. (19.5 m) survival
Accommodation	130 persons
Displacement	66,275 st. (60,124 mt)
Variable Deck	7,165 st. (6,500 mt) operating / 3,307 st. (3,000 mt) transit
Transit Speed	up to 7 knots
Maximum Water Depth	1,640 ft. (500 m)
Maximum Drilling Depth	27,887 ft. (8,500 m)

Drilling Equipment

Derrick	MH Wirth /Beam Leg Construction, Single lift H: 170.6 ft. (52.0 m) Offline stand building
Hookload Capacity	750 st (680 mt) capacity
Drawworks	MH Wirth /GH 3000 EG-AC-SV-01
Compensator	MH Wirth – DSC 750 st. (680 mt) Static, 500 st. (454 mt) compensating. AHC 28 st. (25.6 mt) compensating
Rotary Table	MH Wirth RTSS 60 1/2" – 1,250 st. (1,134 mt)
Top Drive	MH Wirth DDM – 750 – AC - 2M
Tubular Handling	Riser feeding machine, 2 x pipe rack cranes, 2 x tubular feeding machine
Mud Pumps	3 x MH Wirth 2,200 hp. 7500 psi working pressure
HP Mud System	Rated for 7500 psi. K&C manifold 15000 psi.
Solids Control	5 x MH Derrick Dual pool 600 shakers
Burner Boom	Sebo Tech 98 ft (30 m), 10 lines, hydraulic slewing, dual spray nozzle position

Power & Machinery

Main Power	6 x Wartsila 12V32E engines rated 6.300 kw, 720 rpm, each driving Siemens 7,412 kVA AC generators. Total capacity 37.8 MW.
Emergency Power	3 x main engines (one in each engine room) classified as emergency engines/generators.
Power Distribution	Kongsberg Maritime K-Chief 700 Integrated Automation System, closed ring / 3 split, 11 Kv, 690V, 440V, 230V.

Storage Capacities

Fuel Oil	16,354 bbl. (2,600m ³)
Liquid Mud	9,089 bbl. (1,445m ³)
Base Oil	3,956 bbl. (629m ³)
Brine	4,277 bbl. (680m ³)
Drill Water	9,485 bbl. (1,508m ³)
Potable Water	4,283 bbl. (681m ³)
Bulk Material (barite/bentonite)	3,213 cu.ft. (340m ³)
Sack Storage	5,710 sacks. (177m ³)

BOP & Subsea Equipment

BOP Rams	Cameron EVO 18-3/4" 10,000 psi 5 x ram preventers
BOP Annulars	1 x Annulars
BOP Handling	Overhead BOP crane 2 x 165 st. (150 mt) with aux winch
Marine Riser	21", 50 ft. (15.2 m) long, WT 0.625". 500 psi.
Tensioners	Wire line 4 dual and 4 single with a max wire pull of 756 st. (686 mt)
Diverter	16-" flow line, 2 x 16" overboard lines
Tree Handling	Overhead Xmas Tree crane 2 x 55 st. (50 mt) aux winch MH Wirth dual XT stack-up with flush deck skidding arrangement and XT elevator from main deck to moonpool
Moonpool	33.8 ft. (10.3 m) Fwd to Aft x 29.5 ft. (9.0 m) Port to Stbd + Key slot to port side 16.7 ft. (5.1 m) Fwd to Aft x abt 54 ft. (16.5 m) to Port to Stbd

Station Keeping / Propulsion System

Thrusters	6 x Wartsila FS3510-771 each at 5 MW (8deg tilted)
DP System	Kongsberg DP Class 3 (DYNPOS AUTRO and DYNPOS-ER)
Mooring System	POSMOOR ATA(R) – 4 x Rolls Royce windlasses, 8 Primary lines + 4 prelay

Cranes

Cranes	2 x Liebherr BOS 4200, 110 st. (100 mt) at 29.5 ft. (9 m) to 78.7 ft. (24 m) internal lift / 74 st. (67 mt) at 65.6 ft. (20 m) external lift 1 x Riser handling Knuckle Boom Crane, 38.5 (35 mt) at 39.3 ft. (12 m) to 82 ft. (25m)
--------	--

Other Information

Helideck	Rated for Sikorsky S-61N, S92
Barents Sea	Extended derrick windwall cladding and top hat, additional Swbd for heat tracing and pre-heaters for HVAC

Revision Date: 02 March 2023

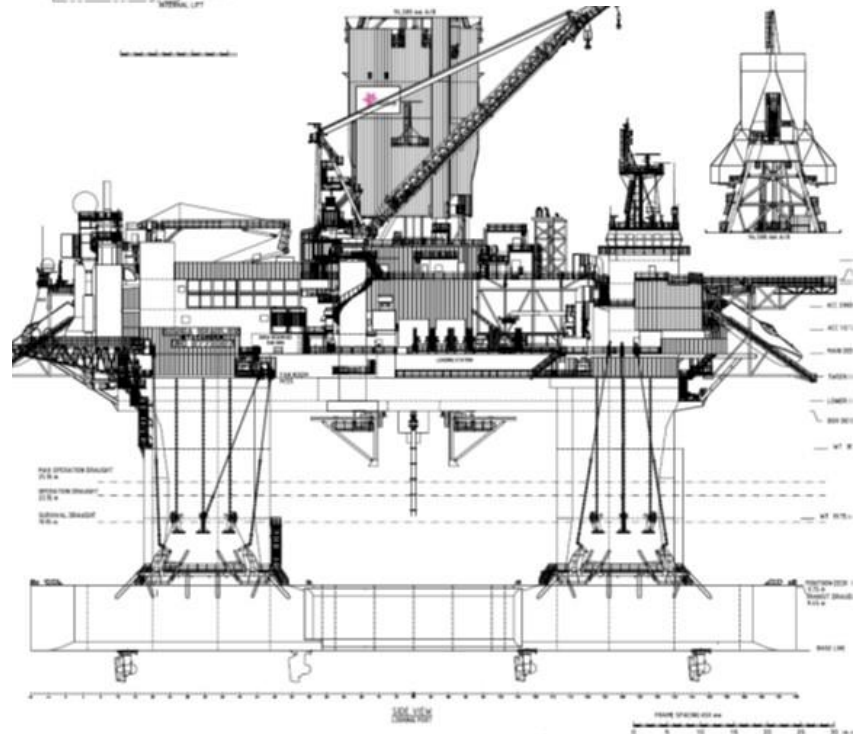
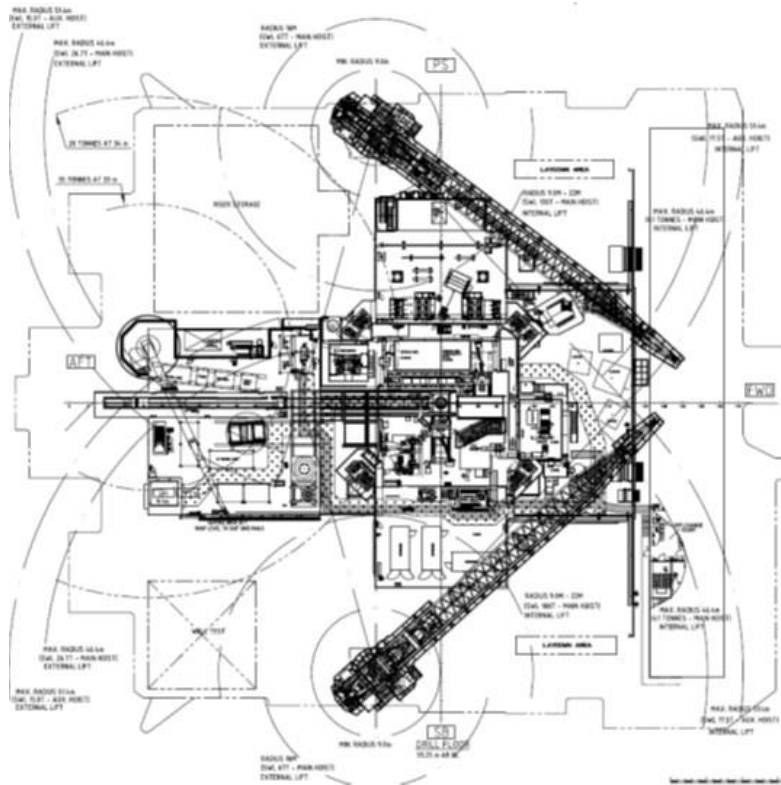


These specifications are intended for general reference purposes only, as actual equipment and specifications may vary based upon subsequent changes, the contract situation and customer needs. All equipment shall be operated and maintained at all times, in compliance with Transocean standard operating manuals, policies and procedures, and within its stated operational limits or continuous rated capacity, in order to assure maximum operational efficiency.

Patent Notice: This rig, its systems, components, and/or equipment in use on this rig, may be protected by one or more US and/or foreign patents.

TRANSOCEAN ENABLER

HARSH-ENVIRONMENT SEMI-SUBMERSIBLE



BOUNDLESS

Revision Date: 02 March 2023



**SERVICE FOCUSED
DATA DRIVEN
PERFORMANCE ORIENTED**

These specifications are intended for general reference purposes only, as actual equipment and specifications may vary based upon subsequent changes, the contract situation and customer needs. All equipment shall be operated and maintained at all times, in compliance with Transocean standard operating manuals, policies and procedures, and within its stated operational limits or continuous rated capacity, in order to assure maximum operational efficiency.

Patent Notice: This rig, its systems, components, and/or equipment in use on this rig, may be protected by one or more US and/or foreign patents.